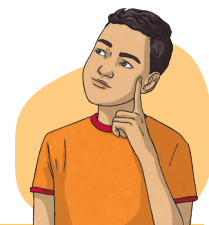


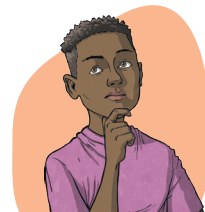
Stage 6 Basic Facts Practice Test A



Name: _____

| Groupings within 1000 | Addition to 20 | Multiplication and Division 6 & 7 |
|---|--|--|
| $240 + \underline{\hspace{2cm}} = 1000$ | $4 + 14 = \underline{\hspace{2cm}}$ | $\underline{\hspace{2cm}} \times 6 = 42$ |
| $160 + \underline{\hspace{2cm}} = 1000$ | $10 + 1 = \underline{\hspace{2cm}}$ | $7 \times \underline{\hspace{2cm}} = 35$ |
| $180 + \underline{\hspace{2cm}} = 1000$ | $8 + 4 = \underline{\hspace{2cm}}$ | $6 \times 10 = \underline{\hspace{2cm}}$ |
| $540 + \underline{\hspace{2cm}} = 1000$ | $1 + 9 = \underline{\hspace{2cm}}$ | $6 \times \underline{\hspace{2cm}} = 24$ |
| $320 + \underline{\hspace{2cm}} = 1000$ | $3 + 9 = \underline{\hspace{2cm}}$ | $10 \times 7 = \underline{\hspace{2cm}}$ |
| $1000 - 390 = \underline{\hspace{2cm}}$ | $10 + \underline{\hspace{2cm}} = 16$ | $6 \times \underline{\hspace{2cm}} = 18$ |
| $1000 - 40 = \underline{\hspace{2cm}}$ | $9 + \underline{\hspace{2cm}} = 16$ | $63 \div 7 = \underline{\hspace{2cm}}$ |
| $1000 - 870 = \underline{\hspace{2cm}}$ | $6 + \underline{\hspace{2cm}} = 19$ | $72 \div 6 = \underline{\hspace{2cm}}$ |
| $1000 - 700 = \underline{\hspace{2cm}}$ | $11 + \underline{\hspace{2cm}} = 18$ | $48 \div 6 = \underline{\hspace{2cm}}$ |
| $1000 - 140 = \underline{\hspace{2cm}}$ | $11 + \underline{\hspace{2cm}} = 11$ | $7 \div 7 = \underline{\hspace{2cm}}$ |
| Subtraction to 20 | Multiplication and Division 3 & 4 | Multiplication and Division 8 & 9 |
| $12 - 9 = \underline{\hspace{2cm}}$ | $\underline{\hspace{2cm}} \times 3 = 3$ | $8 \times \underline{\hspace{2cm}} = 16$ |
| $14 - 4 = \underline{\hspace{2cm}}$ | $3 \times 8 = \underline{\hspace{2cm}}$ | $\underline{\hspace{2cm}} \times 8 = 40$ |
| $15 - 8 = \underline{\hspace{2cm}}$ | $5 \times 3 = \underline{\hspace{2cm}}$ | $8 \times 9 = \underline{\hspace{2cm}}$ |
| $18 - 10 = \underline{\hspace{2cm}}$ | $3 \times \underline{\hspace{2cm}} = 12$ | $9 \times \underline{\hspace{2cm}} = 27$ |
| $18 - 5 = \underline{\hspace{2cm}}$ | $\underline{\hspace{2cm}} \times 4 = 24$ | $9 \times 6 = \underline{\hspace{2cm}}$ |
| $13 - \underline{\hspace{2cm}} = 3$ | $4 \times \underline{\hspace{2cm}} = 40$ | $8 \times \underline{\hspace{2cm}} = 56$ |
| $14 - \underline{\hspace{2cm}} = 8$ | $18 \div 3 = \underline{\hspace{2cm}}$ | $32 \div 8 = \underline{\hspace{2cm}}$ |
| $11 - \underline{\hspace{2cm}} = 1$ | $30 \div 3 = \underline{\hspace{2cm}}$ | $90 \div 9 = \underline{\hspace{2cm}}$ |
| $18 - \underline{\hspace{2cm}} = 4$ | $36 \div 4 = \underline{\hspace{2cm}}$ | $18 \div 2 = \underline{\hspace{2cm}}$ |
| $17 - \underline{\hspace{2cm}} = 8$ | $20 \div 4 = \underline{\hspace{2cm}}$ | $56 \div 8 = \underline{\hspace{2cm}}$ |

Stage 6 Basic Facts Practice Test B



Name: _____

| Groupings within 1000 | Addition to 20 | Multiplication and Division 6 & 7 |
|---|--|---|
| $760 + \underline{\hspace{2cm}} = 1000$ | $11 + 1 = \underline{\hspace{2cm}}$ | $6 \times 3 = \underline{\hspace{2cm}}$ |
| $550 + \underline{\hspace{2cm}} = 1000$ | $0 + 15 = \underline{\hspace{2cm}}$ | $9 \times 6 = \underline{\hspace{2cm}}$ |
| $590 + \underline{\hspace{2cm}} = 1000$ | $8 + 8 = \underline{\hspace{2cm}}$ | $7 \times \underline{\hspace{2cm}} = 14$ |
| $280 + \underline{\hspace{2cm}} = 1000$ | $2 + 17 = \underline{\hspace{2cm}}$ | $\underline{\hspace{2cm}} \times 3 = 21$ |
| $670 + \underline{\hspace{2cm}} = 1000$ | $6 + 12 = \underline{\hspace{2cm}}$ | $\underline{\hspace{2cm}} \times 6 = 24$ |
| $1000 - 110 = \underline{\hspace{2cm}}$ | $3 + \underline{\hspace{2cm}} = 17$ | $7 \times 9 = \underline{\hspace{2cm}}$ |
| $1000 - 420 = \underline{\hspace{2cm}}$ | $13 + \underline{\hspace{2cm}} = 18$ | $49 \div 7 = \underline{\hspace{2cm}}$ |
| $1000 - 710 = \underline{\hspace{2cm}}$ | $7 + \underline{\hspace{2cm}} = 14$ | $35 \div 7 = \underline{\hspace{2cm}}$ |
| $1000 - 620 = \underline{\hspace{2cm}}$ | $4 + \underline{\hspace{2cm}} = 11$ | $30 \div 6 = \underline{\hspace{2cm}}$ |
| $1000 - 510 = \underline{\hspace{2cm}}$ | $15 + \underline{\hspace{2cm}} = 16$ | $14 \div 7 = \underline{\hspace{2cm}}$ |
| Subtraction to 20 | Multiplication and Division 3 & 4 | Multiplication and Division 8 & 9 |
| $10 - 5 = \underline{\hspace{2cm}}$ | $\underline{\hspace{2cm}} \times 3 = 30$ | $\underline{\hspace{2cm}} \times 5 = 40$ |
| $13 - 4 = \underline{\hspace{2cm}}$ | $3 \times \underline{\hspace{2cm}} = 18$ | $\underline{\hspace{2cm}} \times 8 = 80$ |
| $19 - 5 = \underline{\hspace{2cm}}$ | $3 \times 3 = \underline{\hspace{2cm}}$ | $7 \times 8 = \underline{\hspace{2cm}}$ |
| $11 - 3 = \underline{\hspace{2cm}}$ | $4 \times 3 = \underline{\hspace{2cm}}$ | $\underline{\hspace{2cm}} \times 9 = 27$ |
| $12 - 0 = \underline{\hspace{2cm}}$ | $4 \times \underline{\hspace{2cm}} = 24$ | $11 \times \underline{\hspace{2cm}} = 99$ |
| $20 - \underline{\hspace{2cm}} = 18$ | $\underline{\hspace{2cm}} \times 4 = 4$ | $9 \times 4 = \underline{\hspace{2cm}}$ |
| $10 - \underline{\hspace{2cm}} = 2$ | $15 \div 3 = \underline{\hspace{2cm}}$ | $72 \div 9 = \underline{\hspace{2cm}}$ |
| $16 - \underline{\hspace{2cm}} = 9$ | $24 \div 3 = \underline{\hspace{2cm}}$ | $24 \div 8 = \underline{\hspace{2cm}}$ |
| $19 - \underline{\hspace{2cm}} = 14$ | $40 \div 4 = \underline{\hspace{2cm}}$ | $45 \div 9 = \underline{\hspace{2cm}}$ |
| $15 - \underline{\hspace{2cm}} = 12$ | $28 \div 4 = \underline{\hspace{2cm}}$ | $90 \div 9 = \underline{\hspace{2cm}}$ |

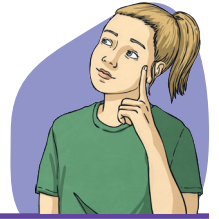
Stage 6 Basic Facts Practice Test C



Name: _____

| Groupings within 1000 | Addition to 20 | Multiplication and Division 6 & 7 |
|---|--|--|
| $620 + \underline{\hspace{2cm}} = 1000$ | $1 + 12 = \underline{\hspace{2cm}}$ | $\underline{\hspace{2cm}} \times 3 = 18$ |
| $770 + \underline{\hspace{2cm}} = 1000$ | $18 + 2 = \underline{\hspace{2cm}}$ | $6 \times \underline{\hspace{2cm}} = 54$ |
| $450 + \underline{\hspace{2cm}} = 1000$ | $14 + 8 = \underline{\hspace{2cm}}$ | $3 \times 7 = \underline{\hspace{2cm}}$ |
| $110 + \underline{\hspace{2cm}} = 1000$ | $6 + 10 = \underline{\hspace{2cm}}$ | $6 \times \underline{\hspace{2cm}} = 42$ |
| $90 + \underline{\hspace{2cm}} = 1000$ | $8 + 6 = \underline{\hspace{2cm}}$ | $\underline{\hspace{2cm}} \times 6 = 30$ |
| $1000 - 10 = \underline{\hspace{2cm}}$ | $18 + \underline{\hspace{2cm}} = 20$ | $7 \times 4 = \underline{\hspace{2cm}}$ |
| $1000 - 330 = \underline{\hspace{2cm}}$ | $2 + \underline{\hspace{2cm}} = 12$ | $60 \div 6 = \underline{\hspace{2cm}}$ |
| $1000 - 880 = \underline{\hspace{2cm}}$ | $0 + \underline{\hspace{2cm}} = 11$ | $6 \div 3 = \underline{\hspace{2cm}}$ |
| $1000 - 890 = \underline{\hspace{2cm}}$ | $6 + \underline{\hspace{2cm}} = 12$ | $35 \div 7 = \underline{\hspace{2cm}}$ |
| $1000 - 490 = \underline{\hspace{2cm}}$ | $6 + \underline{\hspace{2cm}} = 17$ | $36 \div 6 = \underline{\hspace{2cm}}$ |
| Subtraction to 20 | Multiplication and Division 3 & 4 | Multiplication and Division 8 & 9 |
| $19 - 12 = \underline{\hspace{2cm}}$ | $\underline{\hspace{2cm}} \times 3 = 21$ | $\underline{\hspace{2cm}} \times 8 = 64$ |
| $16 - 0 = \underline{\hspace{2cm}}$ | $3 \times \underline{\hspace{2cm}} = 15$ | $\underline{\hspace{2cm}} \times 8 = 72$ |
| $20 - 6 = \underline{\hspace{2cm}}$ | $3 \times 10 = \underline{\hspace{2cm}}$ | $8 \times \underline{\hspace{2cm}} = 24$ |
| $20 - 17 = \underline{\hspace{2cm}}$ | $3 \times \underline{\hspace{2cm}} = 12$ | $9 \times 4 = \underline{\hspace{2cm}}$ |
| $18 - 5 = \underline{\hspace{2cm}}$ | $9 \times 4 = \underline{\hspace{2cm}}$ | $\underline{\hspace{2cm}} \times 9 = 18$ |
| $13 - \underline{\hspace{2cm}} = 7$ | $4 \times \underline{\hspace{2cm}} = 8$ | $9 \times 7 = \underline{\hspace{2cm}}$ |
| $12 - \underline{\hspace{2cm}} = 4$ | $27 \div 3 = \underline{\hspace{2cm}}$ | $54 \div 9 = \underline{\hspace{2cm}}$ |
| $13 - \underline{\hspace{2cm}} = 10$ | $36 \div 3 = \underline{\hspace{2cm}}$ | $8 \div 1 = \underline{\hspace{2cm}}$ |
| $10 - \underline{\hspace{2cm}} = 6$ | $32 \div 4 = \underline{\hspace{2cm}}$ | $45 \div 5 = \underline{\hspace{2cm}}$ |
| $16 - \underline{\hspace{2cm}} = 4$ | $4 \div 4 = \underline{\hspace{2cm}}$ | $32 \div 8 = \underline{\hspace{2cm}}$ |

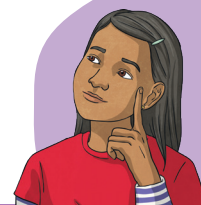
Stage 6 Basic Facts Practice Test D



Name: _____

| Groupings within 1000 | Addition to 20 | Multiplication and Division 6 & 7 |
|-----------------------|-----------------------------------|-----------------------------------|
| 850 + _____ = 1000 | 12 + 2 = _____ | _____ x 7 = 70 |
| 610 + _____ = 1000 | 6 + 4 = _____ | 3 x _____ = 18 |
| 430 + _____ = 1000 | 10 + 7 = _____ | 7 x 3 = _____ |
| 810 + _____ = 1000 | 10 + 3 = _____ | 2 x 7 = _____ |
| 670 + _____ = 1000 | 4 + 9 = _____ | 4 x _____ = 24 |
| 1000 - 580 = _____ | 10 + _____ = 11 | _____ x 5 = 35 |
| 1000 - 640 = _____ | 0 + _____ = 14 | 30 ÷ 6 = _____ |
| 1000 - 320 = _____ | 2 + _____ = 10 | 63 ÷ 7 = _____ |
| 1000 - 470 = _____ | 20 + _____ = 20 | 42 ÷ 6 = _____ |
| 1000 - 30 = _____ | 19 + _____ = 20 | 28 ÷ 7 = _____ |
| Subtraction to 20 | Multiplication and Division 3 & 4 | Multiplication and Division 8 & 9 |
| 18 - 1 = _____ | 8 x 3 = _____ | 2 x _____ = 16 |
| 11 - 9 = _____ | 7 x 3 = _____ | 8 x _____ = 56 |
| 20 - 19 = _____ | 3 x _____ = 6 | 4 x 8 = _____ |
| 14 - 9 = _____ | _____ x 3 = 12 | 8 x 9 = _____ |
| 20 - 15 = _____ | _____ x 4 = 16 | _____ x 9 = 45 |
| 16 - _____ = 15 | 4 x 9 = _____ | 9 x _____ = 81 |
| 19 - _____ = 9 | 21 ÷ 3 = _____ | 48 ÷ 8 = _____ |
| 10 - _____ = 4 | 9 ÷ 3 = _____ | 90 ÷ 10 = _____ |
| 13 - _____ = 6 | 40 ÷ 4 = _____ | 27 ÷ 9 = _____ |
| 10 - _____ = 6 | 8 ÷ 4 = _____ | 8 ÷ 1 = _____ |

Stage 6 Basic Facts Practice Test E



Name: _____

| Groupings within 1000 | Addition to 20 | Multiplication and Division 6 & 7 |
|---|--|---|
| $870 + \underline{\hspace{2cm}} = 1000$ | $6 + 4 = \underline{\hspace{2cm}}$ | $\underline{\hspace{2cm}} \times 7 = 7$ |
| $400 + \underline{\hspace{2cm}} = 1000$ | $14 + 3 = \underline{\hspace{2cm}}$ | $6 \times 8 = \underline{\hspace{2cm}}$ |
| $360 + \underline{\hspace{2cm}} = 1000$ | $6 + 14 = \underline{\hspace{2cm}}$ | $5 \times 6 = \underline{\hspace{2cm}}$ |
| $710 + \underline{\hspace{2cm}} = 1000$ | $2 + 13 = \underline{\hspace{2cm}}$ | $6 \times \underline{\hspace{2cm}} = 42$ |
| $220 + \underline{\hspace{2cm}} = 1000$ | $7 + 5 = \underline{\hspace{2cm}}$ | $\underline{\hspace{2cm}} \times 4 = 24$ |
| $1000 - 160 = \underline{\hspace{2cm}}$ | $13 + \underline{\hspace{2cm}} = 19$ | $7 \times \underline{\hspace{2cm}} = 70$ |
| $1000 - 290 = \underline{\hspace{2cm}}$ | $12 + \underline{\hspace{2cm}} = 19$ | $18 \div 6 = \underline{\hspace{2cm}}$ |
| $1000 - 50 = \underline{\hspace{2cm}}$ | $1 + \underline{\hspace{2cm}} = 13$ | $21 \div 7 = \underline{\hspace{2cm}}$ |
| $1000 - 330 = \underline{\hspace{2cm}}$ | $6 + \underline{\hspace{2cm}} = 14$ | $28 \div 7 = \underline{\hspace{2cm}}$ |
| $1000 - 260 = \underline{\hspace{2cm}}$ | $4 + \underline{\hspace{2cm}} = 11$ | $60 \div 6 = \underline{\hspace{2cm}}$ |
| Subtraction to 20 | Multiplication and Division 3 & 4 | Multiplication and Division 8 & 9 |
| $15 - 2 = \underline{\hspace{2cm}}$ | $\underline{\hspace{2cm}} \times 3 = 6$ | $9 \times 8 = \underline{\hspace{2cm}}$ |
| $17 - 7 = \underline{\hspace{2cm}}$ | $3 \times \underline{\hspace{2cm}} = 27$ | $8 \times \underline{\hspace{2cm}} = 8$ |
| $20 - 13 = \underline{\hspace{2cm}}$ | $3 \times 7 = \underline{\hspace{2cm}}$ | $8 \times \underline{\hspace{2cm}} = 32$ |
| $15 - 6 = \underline{\hspace{2cm}}$ | $4 \times \underline{\hspace{2cm}} = 12$ | $9 \times \underline{\hspace{2cm}} = 81$ |
| $12 - 9 = \underline{\hspace{2cm}}$ | $\underline{\hspace{2cm}} \times 4 = 20$ | $9 \times 7 = \underline{\hspace{2cm}}$ |
| $11 - \underline{\hspace{2cm}} = 1$ | $8 \times 4 = \underline{\hspace{2cm}}$ | $10 \times \underline{\hspace{2cm}} = 80$ |
| $15 - \underline{\hspace{2cm}} = 15$ | $30 \div 3 = \underline{\hspace{2cm}}$ | $40 \div 8 = \underline{\hspace{2cm}}$ |
| $12 - \underline{\hspace{2cm}} = 1$ | $3 \div 3 = \underline{\hspace{2cm}}$ | $18 \div 9 = \underline{\hspace{2cm}}$ |
| $19 - \underline{\hspace{2cm}} = 15$ | $24 \div 4 = \underline{\hspace{2cm}}$ | $56 \div 8 = \underline{\hspace{2cm}}$ |
| $16 - \underline{\hspace{2cm}} = 7$ | $16 \div 4 = \underline{\hspace{2cm}}$ | $54 \div 9 = \underline{\hspace{2cm}}$ |