



Team 3 Newsletter

Term 3, 2018

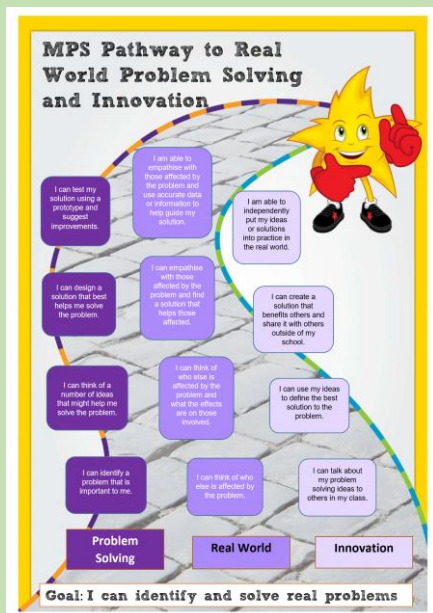
Piwakawaka, Double Hill & Barrhill

Welcome back to Term 3 to all our Team 3 families
We look forward to another great term of learning ahead!

Connected Curriculum



This term we are looking outside our classrooms for problems that affect us. We will be using our big topic “**Community & Change**” to investigate how we can be creative and innovative to solve problems. We have a new 21st Century Learning Pathway to follow! We may need your help and expertise – so look out for further updates



Home Learning



Home learning should take around 20—30 minutes daily. This will include:

- Daily Reading (as above)
- Word Lab
- Maths Basic Facts
- Matific and other suggested Websites are optional

Students will need to track their home learning in their diary and it will be regularly checked.

Literacy Focus



We will be digging deeper into texts this term and thinking about ideas that we can predict and infer about the meaning. “What do you think...” type questions will be helpful to ask at home.

Numeracy Focus



Most students will have a focus on Multiplication & Division this term. This may involve the early stage of Skip Counting or more advanced problem solving using a range of strategies. Learning of some ‘Times Tables’ will also be included. Money is also a topic we will be using to help with understanding.

Responsible



Responsible is our Term 3 MPS STAR focus! This also links with our MPS Pathway to **Self-Regulation**. Once again, we will be promoting risk-taking and learning through trying new things. We continue to build on our students’ ability to manage their learning time effectively, respond to feedback and show motivation for a learning task through producing quality work.

Coming Events



- **3rd August** – Friday Snow Sports Option Starts (6 wks)
- **9th August** – Piwakawaka Snow Sports Class Trip
- **13th August** – Double Hill & Barrhill Snow Sports Trip
- **14th August** – Opuke Kahui Ako half day for students
- **15th August** – teacher full day strike
- **20th August** – Team 3 second Snow Sports Trip
- **30th August** – MPS Speeches
- **Week 7** – Literacy Week



Reminders



- *Make sure you have a full kit of clothing for your Mt Hutt trip. Layers are essential! See us if you need help finding gear.
- *Please name all clothing and belongings that come to school
- * Let us know if you are keen to join us as a regular Parent Help.
- *We will be running Whanau Huis on Thursday afternoons (odd weeks) 2:05 – 2:45pm. Come and join us!!
- *Look out for Seesaw Posts this term that share our learning. Feel free to comment!



***Come and see us if you have any questions about the learning and/or happenings in Team 3.**